

**PROJECT:**  
**1-3 THE LANES, BRACTON CENTRE**

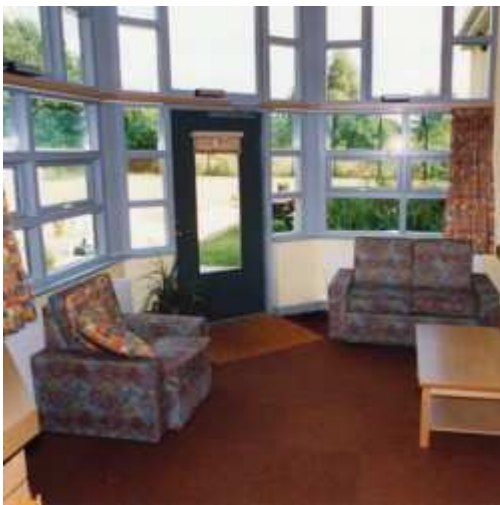
**CLIENT:**  
**OXLEAS NHS TRUST**

**ARCHITECT:**  
**TANGRAM ARCHITECTS AND  
DESIGNERS**

**COST:**  
**£1,200,000**



Central court of the unit



Part of the lounge

## Bracton Centre

The Bracton Centre cares for people with mental health problems in a secure environment. The new self-contained secure unit is constructed next to an existing campus treating patients close to their local communities and families. The unit is located in a rural setting which provides a therapeutic environment for rehabilitation.

## Natural Environment

The unit makes full use of natural light and air. Roof-mounted proprietary ventilators provide natural ventilation. The security problems associated with large opening windows in bedrooms are avoided. Full-height glazed panels let light flood the communal lounge.

## Internal Fittings

Fittings are secure and strong enough to withstand a lot of hard use while still keeping a therapeutic atmosphere. Low surface temperature radiators are used in patient areas. Light fittings are specially designed to be tamper-proof while retaining a domestic appearance.

## Secure Services

Services are simple and robust, and heating plant is accessible from outside the building. An air-lock lobby gives secure entry and exit from the building. The emergency call systems alert staff in the unit and across the site.